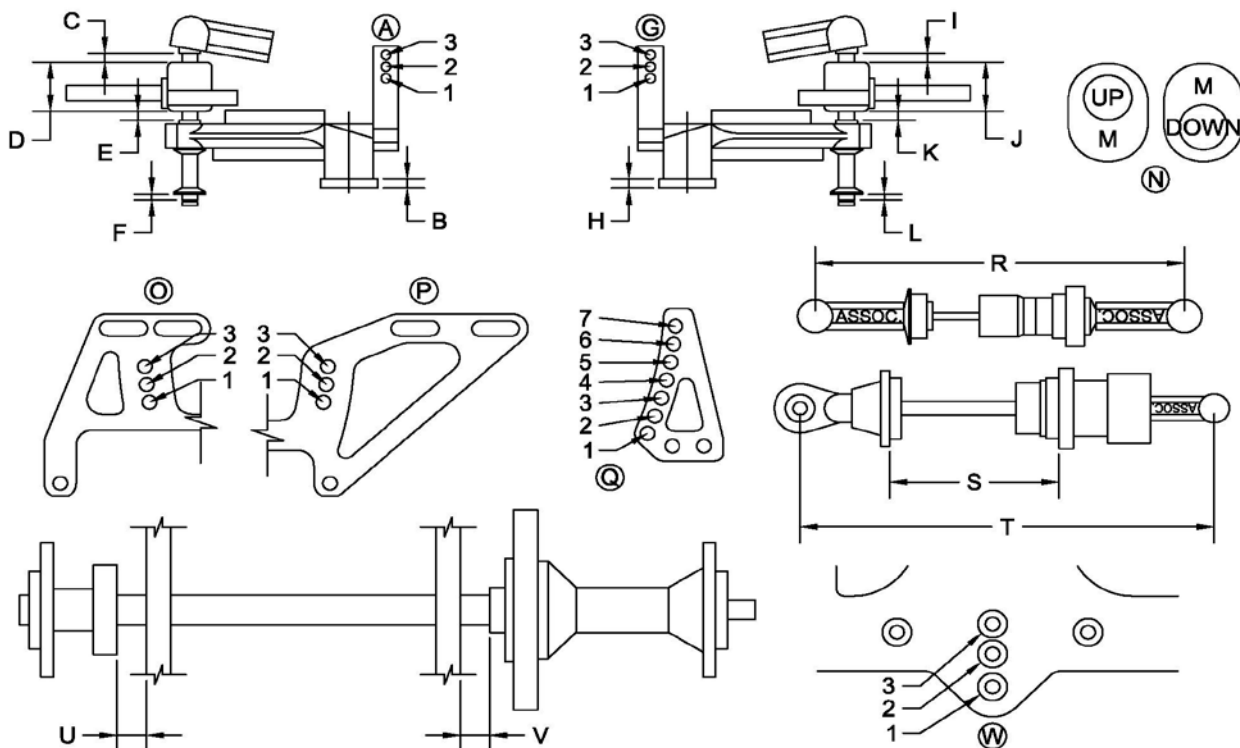


Date: 9/17/2017		Class: HCOT BGN North	
Track			
Track: Beaver Raceway (120')			
Surface:		Gray Ozite	
	Left	Right	
	Front		
Castor	0	4	
Reactive Castor	0	0	
Camber	2	-3	
Spring	0.018	0.018	
Spring Retainer	McPappy		
King Pin Lube	Ass. 100K	Ass. 100K	
Tire Brand	CRC	CRC	
Tire Compound	-	-	
Camber Cut	-	-	
Tire Diameter	2.45	2.45	
Weight	9.500	6.200	
	Rear		
Rear Steer	0		
Shock Spring	Opaque	Assoc. Blue	
Shock Oil	35	35	
Tire Brand	CRC	CRC	
Tire Compound	-	-	
Tire Diameter	2.45	2.45	
Weight	14.400	4.600	
T-Plate Spacers	0.100		
	Misc		
Servo	Futaba 9650		
Dual Rate	25		
Battery	Fantom 100C 3900		

Center			
Shock Brand	Tamiya	Shock Oil	Losi 50
Shock Piston	Tamiya 2 Hole	Spring Brand: KSG	
Spring Color	Black	Spring Rate	
T-Plate: MR2016 Fiberglass Short Bias Cut Solid			
Chassis			
Cross Weight	59.37%	Right Side %	31.12%
Total Weight	34.700	Left Side %	68.88%
Chassis Type	Mertz Racing 513R		
Front End	Original KSG		
Traction Compound: SXT 3.0			
Speed Control: Keyence			
Rear Body Mount Location:		On Shock Tower	
Body: Protoform RTC			
Motor			
Motor: Photon Speed 2			
Rotor: N/A			
Winds	-	Timing	-
Pinion	21	Free Rev Amp	-
Spur	128	Roll Out	1.26
Results			
Heat 1:		Heat 2:	
Heat 3:		Qualify Position: 2nd	
Main: 2nd A-Main			
Notes:			
The Center Shock had 31mm HPI Shock Shaft.			
513R Rear Pd Spacer Used.			
All added weight to the Left Rear.			
Diff set to slip a little so the car is not as loose when tires are cold.			



A	2
B	.220"
C	0
D	KSG
E	0
F	.020"
G	1
H	.240"
I	.020"
J	KSG
K	0
L	0
M	3
N	Up
O	2
P	2
Q	7
R	2.9
S	1.01
T	3.43"
U	.060"
V	.120"
W	2